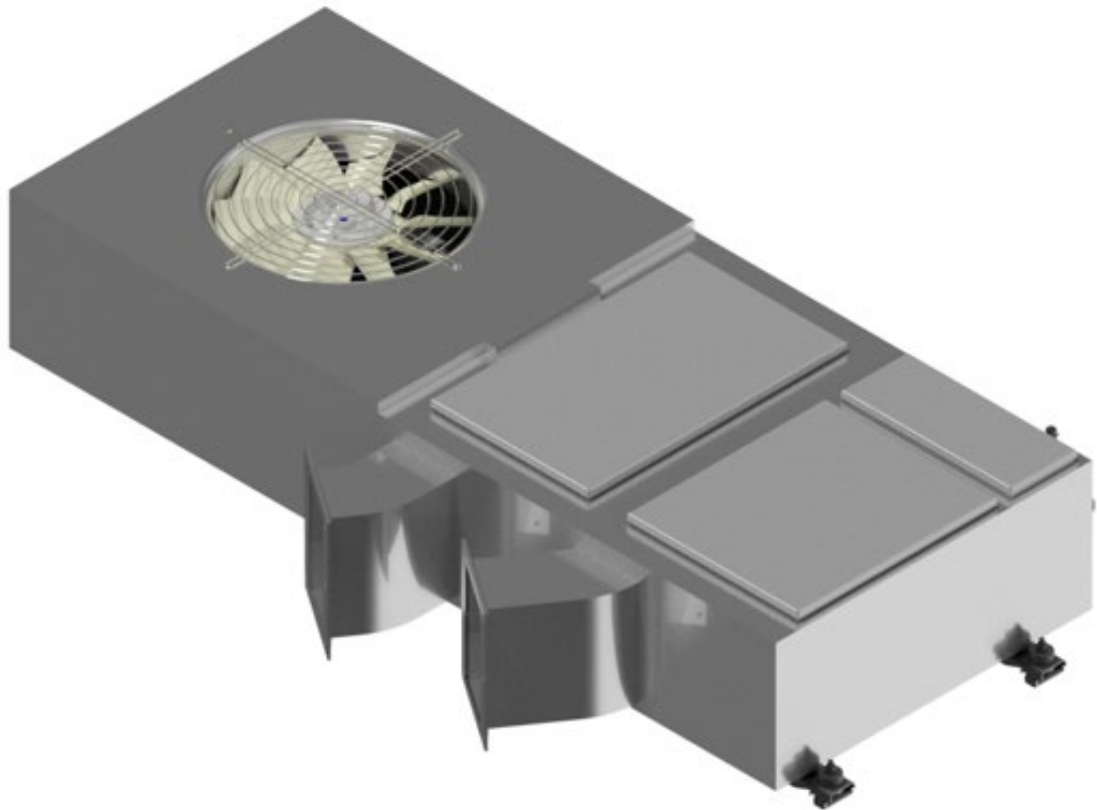


# Streetcar

## Driver HVAC Unit

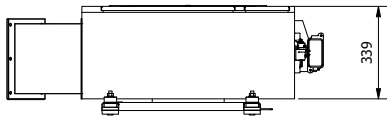


Ref. STRDHU0000

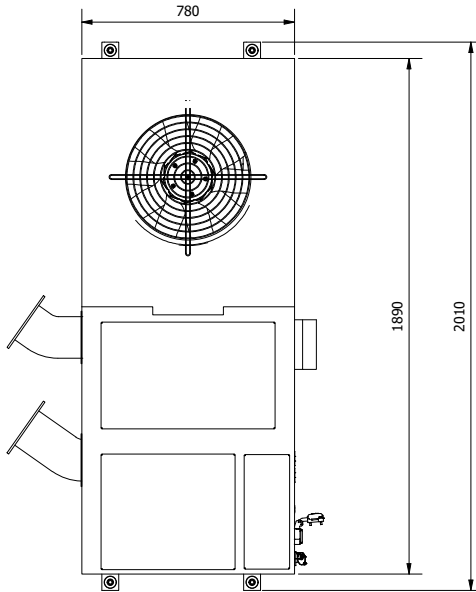
### SPECIFICATION

<b>Cooling Capacity</b>	4.5kW @ 35°C, 50% RH
<b>Heating Capacity</b>	5.0kW
<b>Recirculation</b>	700 - 1100m <sup>3</sup> /h, but current design is done for 800m <sup>3</sup> /h
<b>Fresh Air</b>	30 - 60m <sup>3</sup> /h, but current design is done for 60m <sup>3</sup> /h
<b>Weight</b>	150kg
<b>Max Power Consumption</b>	Cooling: Max 2.77kW @ 40°C - COP = 1.65 (Lowest) Max 2.07kW @30°C - COP = 2.17 (Average) Heating: Max 5.41kW @ -35°C
<b>Refrigerant</b>	R513a - 2.5kg ±15%

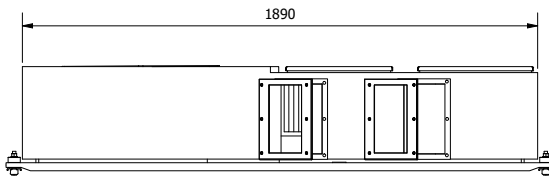
**FRONT, TOP, LEFT & ISOMETRIC VIEWS**



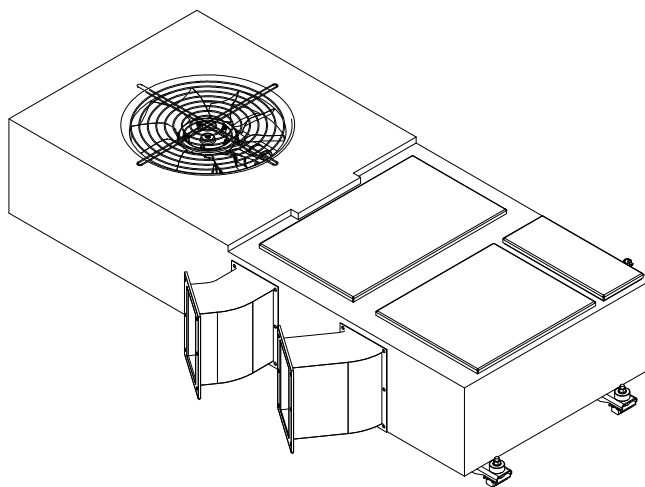
FRONT VIEW



TOP VIEW



LEFT HAND VIEW



ISOMETRIC VIEW